



Somerset Bridge Primary School
Aspire - Brave - Care - Collaborate

Design and Technology

Year 6

Key Learning



Know that modroc is applied as a liquid and **hardens** over time.

Know how to read **contour** lines showing **altitude** on a map.

Know how to choose materials (paper/wire/cardboard) for the base of the island based on their **properties**.

Know how to use a wire **mesh** to create a base for a model.

Know how to **layer** materials to create **shape** and **texture**.

Know how to give **constructive criticism** about another person's work.

Modroc Islands

Modroc is a plaster filled gauze designed to aid the healing of bones in the medical profession. It is also used for creating models due to its beneficial chip resist and drying qualities.

Modroc can be modelled around wire netting, foil, newspaper etc or on a former such as a mannequin.

Modroc absorbs moisture so you need to keep the unused material away from water or moisture in the air. The temperature of the water also effects setting time - cold water slower, warm water quicker.



Step One: Create an armature from polystyrene shapes, newspaper, wire, cardboard, masking tape etc.



Step Two: Use Modroc shears to cut strips of Modroc suitable for the size of the artwork.



Step Three: Add a squirt of PVA to a container of water.



Step Four: Dip single Modroc strips into water/PVA mixture and squeeze.



Step Five: Wrap Modroc over your armature.



Step Six: Make sure to overlap strips and vary directions to give strength to artwork.

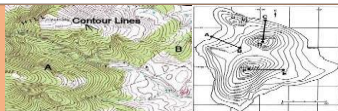


Step Seven: Smooth the Modroc with fingers to blend the plaster and hide the edges of the bandages.

Key Vocabulary



Altitude	The height of an object or point in relation to sea level or ground level.
Contour Lines	Contour lines can be found on a map around key human and physical features on a map. They show where the feature is in relation to the sea or ground level.
Mesh	A material made of a network of interlinked wire or thread.
Properties (of materials)	The capabilities and state of a product. For example wire provides a strong base for the island but paper and cardboard is more flexible for creating more detailed molds.
Texture	The feel, appearance, or consistency of a surface or substance.
Aesthetics	The way a product looks and feels.
Constructive Criticism	Feedback, supported by specific examples of improvements that could be made.



Design



Make



Evaluate

