

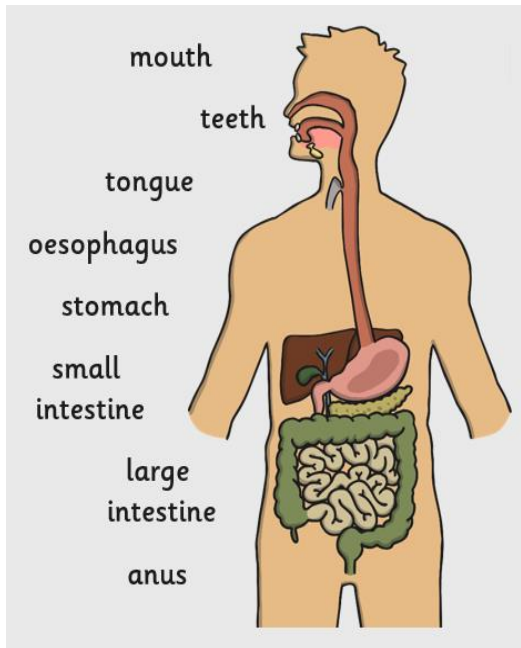


Somerset Bridge Primary School  
Aspire - Brave - Care - Collaborate

## The Digestive System



The different parts of our digestive system do different jobs.



## Science - Year 4 Animals Including Humans

### Human Teeth



We have different types of teeth that do different jobs:

Incisors :

Used for biting and cutting food



Molars:

Grinding food



Premolars:

Holding and crushing food

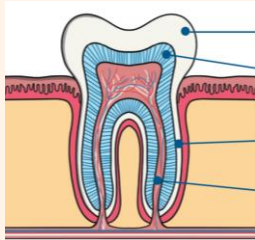


Canines:

Used for tearing and ripping food



Teeth are made up of different parts that have different functions.



enamel

dentine

cementum

pulp

### Links to Real Life

If we understand our digestive system, we can make sure we are keeping ourselves healthy.

Using food chains helps us see how animals in different habitats depend on each other so that we can look after them.

### Key Vocabulary



food chain

A series of organisms dependent on the next as a source of food.

organisms

Living things including plants and animals.

dependent

If you are dependent on something, then you need it to survive.

producer

An organism that can produce its own food.

consumer

An organism that eats another organism to get energy.

prey

An animal that is hunted by another animal.

predator

An animal that hunts other animals for food.

Food Chains:

producer



consumers

