



Somerset Bridge Primary School
Aspire - Brave - Care - Collaborate

Science - Year 3

Plants

Key Vocabulary



life cycle



Flowering plant's life cycles start with a seed.

photo-synthesis



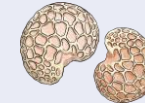
This is the name for how plants use light and air to make energy.

pollen



Insects or the wind carry pollen between flowers.

seed formation



Once flowers have been pollinated, the plant forms a seed.

seed dispersal



Seeds from a plant are spread around to make sure they have space to grow.

Parts of a Plant



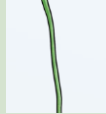
The parts of flowering plants have different functions:

flower



attract insects for pollination

stem



transport water and nutrients around the plant

leaves



collect sunlight and oxygen for photosynthesis

roots



take in water and nutrients from the soil

Plant Lifecycles



plants use flowers to attract insects for pollination:

insects like bees and butterflies visit flowers because of...



bright petals
sweet smell
nectar to drink

seeds can be dispersed in different ways:

wind



animal

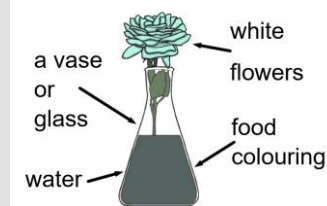


water



Being a Scientist

We can find out about how water travels in plants by setting up an enquiry.

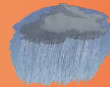


To grow, plants need:

Sunlight



Water



Air



Nutrients



Space

